

UCD-422

HDMI 2.1 Video Generator & Analyzer

PRELIMINARY



10K Video Generator & Analyzer

UCD-422 is a video generator and analyzer for testing HDMI 2.1 interface up to 10K video modes. Resolutions supported are 4K@120Hz, 8K@60Hz and 10K@30Hz with uncompressed video. UCD-422 offers support for FEC*, DSC* Sink & Source and eARC*. HDCP 2.2* and HDCP 2.3* are also supported. UCD-422 is a flexible and robust tool either via an easy-to-use GUI for R&D debugging or via automated functional tests. UCD Console GUI provides the user access to the vital parameters and controls of the tests.

UCD Console GUI

The graphical user interface for R&D debugging is called the UCD Console. It provides the user with a flexible way of navigating between the interface based roles of the device and the functionalities of each role. The UCD Console features a preview window for the received video and audio, monitoring and controls for the link parameters and built-in pattern generator.

Highlights

- HDMI 2.1 Test Equipment (FRL/TMDS)
- Variable Refresh Rate (VRR)
- Auto Low Latency Mode (ALLM)
- Forward Error Correction (FEC)*
- HDCP 2.2 & HDCP 2.3 Support*
- 10K@30Hz Support
- 8K@60Hz Support
- eARC Support*
- DSC Support*

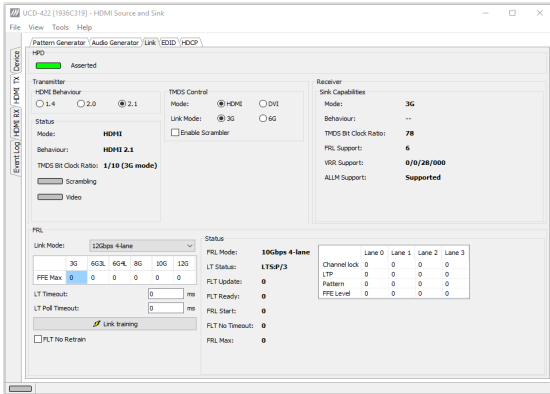
Video Analyzer Software*

*) Please contact Unigraf for detailed availability

UCD-422

HDMI 2.1 Video Generator & Analyzer

PRELIMINARY

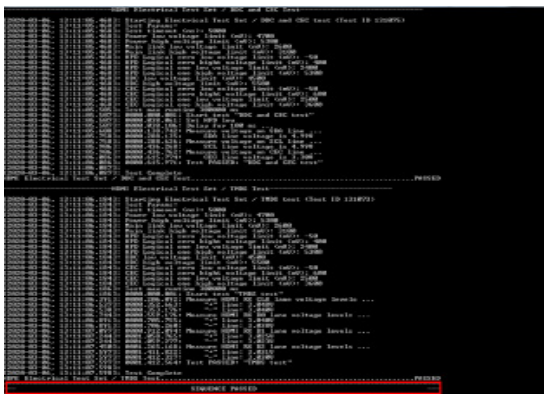


Fixed Rate Link (FRL)

Fixed Rate Link (FRL) is the new video transport method in HDMI 2.1. The UCD-422 can identify interoperability issues on FRL capable source and sink devices. Users can verify if an image is captured correctly on the UCD Console when testing source devices using different FRL modes.

Enhanced Gaming Features

Check the availability of enhanced gaming features on sink and source devices that support Variable Refresh Rate (VRR) and Auto Low Latency Mode (ALLM). By supporting these enhanced gaming features, the UCD-422 makes for a complete test tool for game console and display manufacturers.



High Level Test Functions

Unigraf high level test software interface TSI (Test System Interface) that can be run from the command line provides the System Integrator a set of reliable and short cycle time interface specific tests. TSI readily implements the low level procedures needed for verifying the various functions of the test interface and the required software integration is minimal.

Specifications

Input	HDMI 2.1 (10K@30Hz) (HDMI Rx)
Output	HDMI 2.1 (10K@30Hz) (HDMI Tx)
HDMI 2.1 Features	FRL, TMDS*, ALLM, VRR
Content Protection	HDCP 2.2*, HDCP 2.3*
Additional features	eARC*, DSC*, FEC*
Computer Interface	USB 3.0
Operating System	Windows 10, 8 and 7
Software	UCD Console GUI TSI API with interface specific Test Sets
Power Input	AC/DC Power supply 100 to 240 Vac 50/60 Hz input, +12 Vdc output
Module Size	272 x 170 x 60 mm
Weight	1.2 kg w/o power supply

All specifications subject to change without notice.



www.unigraf.fi • www.unigraf-china.cn

UNIGRAF OY Piispantilankuja 4, FI-02240 Espoo, Finland
Tel +358 9 859 550; info@unigraf.fi

Please visit our web page for listing of Unigraf Worldwide Distribution

